

Touch Display Computer / Panel PC

Model: DL-DM700x

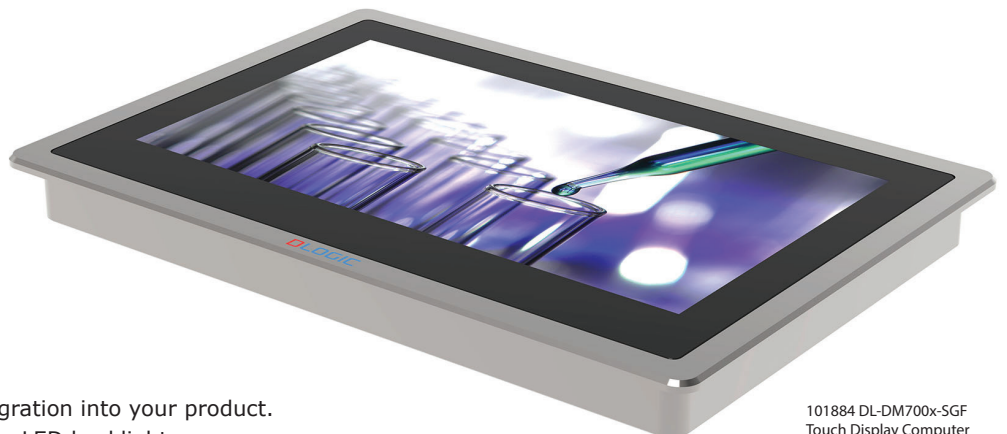


- ◆ Appliances & Vending
- ◆ Industrial Control
- ◆ Marine & Trucking
- ◆ Laboratory Equipment
- ◆ Food Processing
- ◆ Healthcare & Medical
- ◆ Harsh Environment

The most comprehensive all-in-one Touch Display Computer solution on the market

Our Touch Display Computers / Panel PCs are slim attractive all-in-one human interface solution ready for use in your application. They are designed for rapid implementation into industrial equipment, appliances, vending machines, marine, trucking, healthcare and are suitable for indoor, outdoor and harsh environments. DLOGIC Touch Display Computers integrates a color display, a projected capacitive touch sensor and an embedded computer into a stainless-steel housing with an aluminium frame creating a solid rugged assembly protecting the sensitive parts. They come with many standard interfaces and are configured with Linux ready for loading and running your applications. Our Touch Display Computer provide a cost effective and fast track to equip your product with state of the art touch-based user interfaces and enhanced embedded computing power.

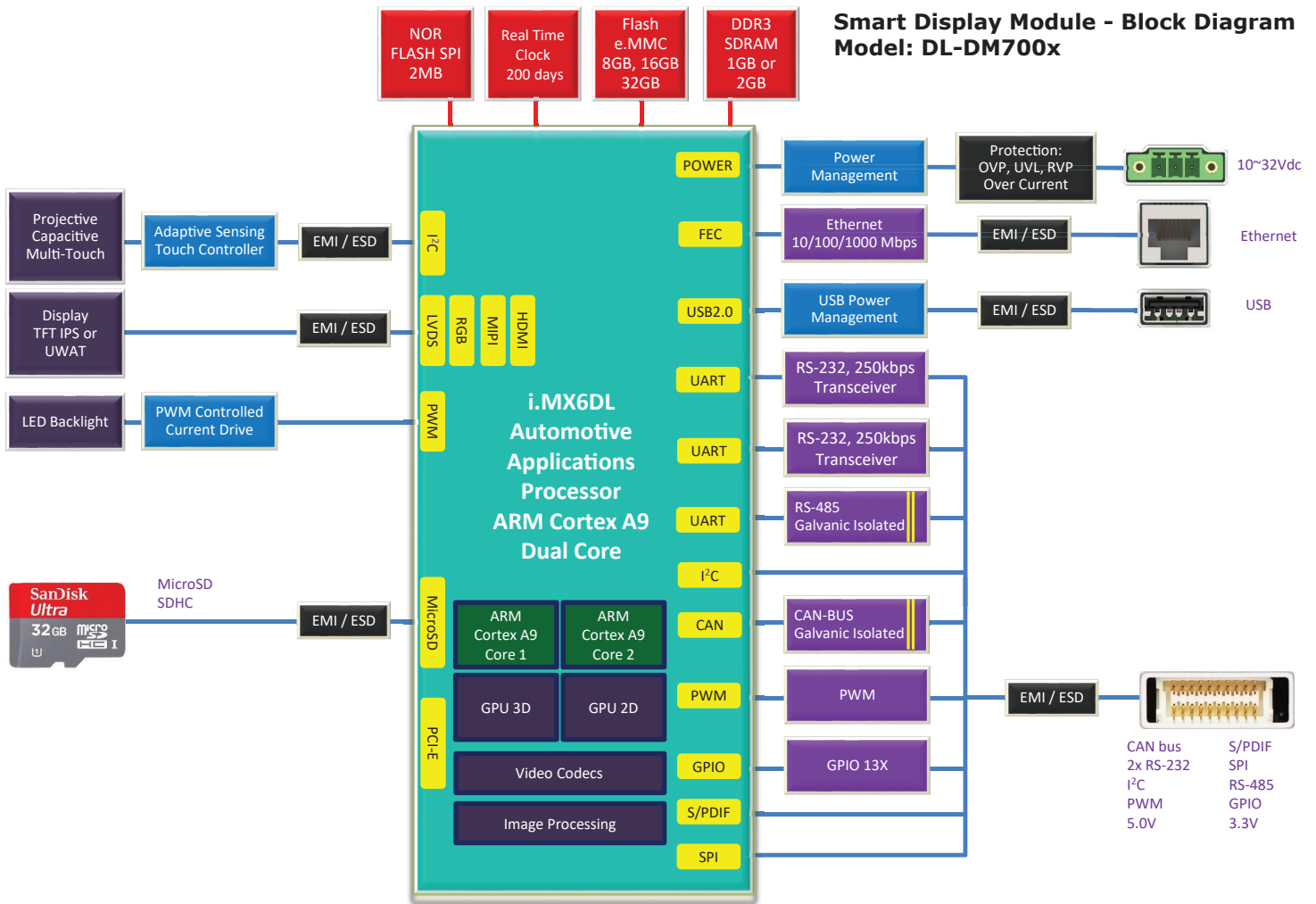
- Fast time to market.
- Simple integration.
- Low development risk.
- Guaranteed > 7 years supply.



101884 DL-DM700x-SGF
Touch Display Computer

Key Features

- Touch Display Computers ready for integration into your product.
- IPS TFT LCD display with high brightness LED backlight.
- Slim metal housing with a range of high reliability standard interfaces.
- Software Board Support Package, HTML5, JAVA, QT, 2D, 3D Graphics and Video Playback.
- Tailored mechanical mounting and integration solutions.
- Simple addition of custom interface extensions.
- Optional optically bonded 4mm safety glass solutions.
- Supported by a highly skilled engineering team.



DL-DM700x

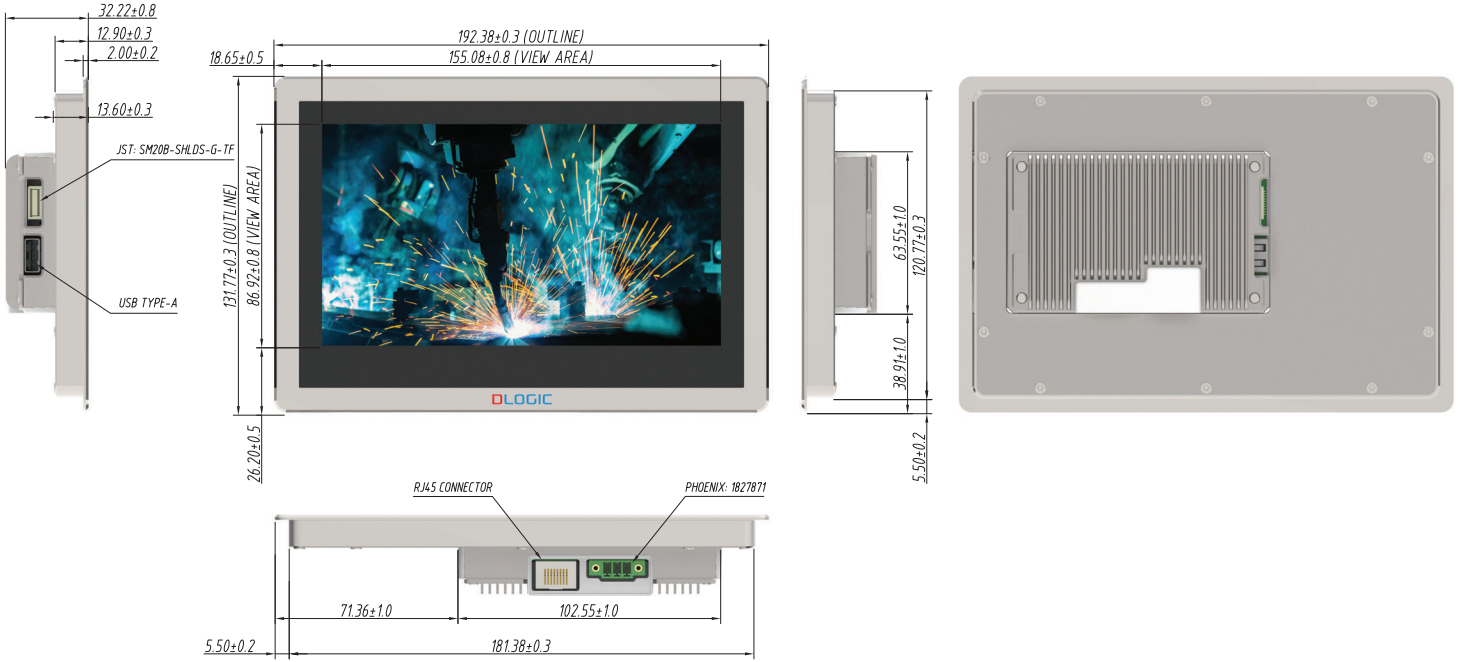
- 7.0" IPS TFT LCD 1024x600, LED backlight
 - Brightness (incl. touch): 550 cd/m²
- Projected Capacitive Touchscreen
 - Multi-touch
 - Moisture Water Compensation
 - Glove Support
- Optically bonded display & touch screen
- NXP / Freescale Automotive i.MX6DL Dual Core Cortex A9
- 1GB DDR3L SDRAM (Industrial)
- 8GB e.MMC (Industrial)
- 2MB NOR Flash (Industrial)
- Battery backed real time clock (200 days)
- Interfaces
 - Gigabit Ethernet, USB, 2x RS-232, I²C
 - Galvanically isolated CAN-BUS, PWM, GPIO
- Aluminium Mounting Frame
- Stainless steel protective housing
- **Options**
- Hardware
 - Galvanically Isolated RS-485, uSD Card, SPI
 - NXP i.MX6Quad 1GHz Automotive Grade Processor
 - Memory: 16/32/64GB e.MMC, 2GB DDR3L SDRAM
- Mechanics
 - Safety Glass 4mm optically bonded



• Standard Software Features and Tools

- Fully functional board support package (BSP)
 - Debian Linux including access to all standard packages
 - HTML5, JAVA, QT5 GUI application development
 - GPU hardware accelerated graphics support
 - VPU hardware video encoding/decoding support
 - Drivers for all interfaces
- Ready to go Debian Linux virtual machine (VM) application development environment
 - Cross compile tools
 - QT5 with Integrated Development Environment
 - Demo applications with source code

101853 DL-DM700x Touch Display Computer Dimension Drawing



Industrial

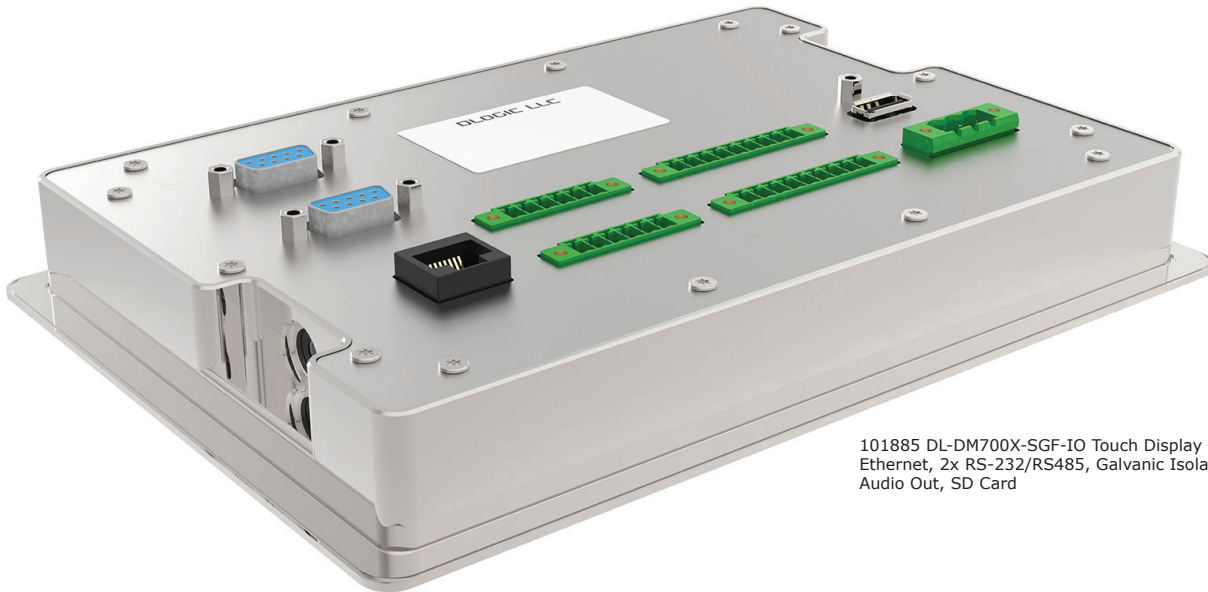


Automotive



Display Size	
Size	7.0 inch
Type	LCD TFT, Ultra-wide viewing
Mode	IPS, Transmissive
Resolution	1024 x 600 pixels, WSVGA
Backlight	550 cd/m ² (incl. touch screen)
Colors	24-bit RGB
Orientation	Landscape and Portrait mode
Touch Screen	
Type	Projected Capacitive Touch PCT
Touch	Multitouch (Water, Glove support)
CPU	
Type	NXP / Freescale i.MX6DL Cortex A9 [Option: i.MX6Q]
Clock/Frequency	800 MHz (Automotive Grade) [Option: 1GHz]
Memory	
SDRAM	1 GB DDR3 (Industrial) [Option: 2GB]
FLASH	8 GB e.MMC (Industrial) [Option: 16, 32, 64GB]
SPI NOR Boot FLASH	2 MB (Industrial, 20 years data retention)
MicroSD	SDHC [HW Option]
Features	
Real Time Clock	Battery backed Real Time Clock (min. 200 days)
Interfaces	
Network	1x 10/100/1000 MBit/s Ethernet
Asynchronous Serial Interfaces	2x RS-232
Synchronous Serial Interface	1x I ² C (400 Kbit/s) [Configurable]
USB	1x USB 2.0 Hi-Speed OTG
CAN	1x CAN 2.0B Galvanic Isolated
SPI	1x SPI [HW Option]
PWM	1x PWM, 12-bit, 125kHz [Configurable]
RS-485	1x RS-485 Galvanic Isolated [HW Option]
GPIOs	Up to 13x GPIOs [Configurable]
Digital Audio	1x S/PDIF Out
Software	
Linux	Debian [access to all std packages]
Application Environment	HTML5, JAVA, QT5, 2D, 3D Graphics, Video
Mechanical	
Mounting	Aluminium Frame
	[Option: Stainless Steel Frame S31600]
	[Option: PC, PC/ABS, PA Frame]
Optical Bonding	Display & Touch Panel optically bonded
Electronics Housing material	Stainless steel
Cover Glass	1.1mm Chemically Strengthened Glass [Option: 4mm Safety Glass UL751]
Power	
Supply & Consumption	12V, 0.5A, 6.0W [10Vdc ~ 32Vdc]
Environmental Conditions	
Storage Temp	-30 ~ +80°C
Operating Temp	-20 ~ +70°C
Relative Humidity	95 % (non condensating)
Device Dimensions	
Height x Width x Depth	192.36 x 131.77 x 31.65 mm
Weight (g)	800g

Get a custom DLOGIC Touch Display Computer



101885 DL-DM700X-SGF-IO Touch Display Computer
Ethernet, 2x RS-232/RS485, Galvanic Isolated IO, USB
Audio Out, SD Card

Our Touch Display Computer hardware and software is optimized for quick adaptation and customization to specific product requirements. To get started we recommend you purchase one of our standard development kits which are available in all sizes and, provide all of the 'out of the box' hardware and software tools required to get your development going within hours, not weeks and months! Our in-house engineering team provides all the support necessary for your team during the entire engineering process.

If one of our standard Touch Display Computers will not do, our engineering team is at your service to provide customized solutions tailored for your application needs. Typical customizations include special housing and mounting solutions, display and touch panel alterations, additional external interfaces, software board support enhancements and software application development including graphical user interface (GUI) design.

When engineering is completed we manufacture and assemble your Touch Display Computer to your product requirements within our manufacturing facilities.

We provide cost efficient high-quality manufacturing services and support during the entire product lifecycle. Our factory is specialized in industrial and robotics product manufacturing and is certified for ISO9001, QS9000, ISO14000, ISO14001, OHSAS18000, UL, TUV and TS16949-1/2.



101890 DL-DM700x-SGR Rear Mount Frame with
4mm Safety Glass optically bonded

Order Information

Part No.	Description
101929	DEV KIT TOUCH DISPLAY COMPUTER DL-DM700x, ALU FRAME, IPS 7.0" 550cd/m ² , OPTICAL-BONDING, CAP TOUCH, FRONT MOUNT
101853	TOUCH DISPLAY COMPUTER DL-DM700x, ALU FRAME, IPS 7.0" 550cd/m ² , OPTICAL-BONDING, CAP TOUCH, FRONT MOUNT
101884	TOUCH DISPLAY COMPUTER DL-DM700x-SGF, ALU FRAME, IPS 7.0" 550cd/m ² , OPTICAL-BONDING, CAP TOUCH, SAFETY GLASS FRONT MOUNT
101890	TOUCH DISPLAY COMPUTER DL-DM700x-SGR, ALU FRAME, IPS 7.0" 550cd/m ² , OPTICAL-BONDING, CAP TOUCH, SAFETY GLASS REAR MOUNT
101878	TOUCH DISPLAY COMPUTER DL-DM700x-H, STAINLESS STEEL FRAME, IPS 7.0" 550cd/m ² , OPTICAL-BONDING, CAP TOUCH FRONT MOUNT
101885	TOUCH DISPLAY COMPUTER DL-DM700x-SGF-IO, ALU FRAME, TFT 7.0" 550cd/m ² , OPTICAL-BONDING CAP TOUCH, SAFETY GLASS FRONT MOUNT

For further information:

DLOGIC EUROPE

Schellenberg 8
DE-79798 Altenburg
Germany
Phone: +49 7745 2799 390
E-mail: eusales@dlogic.com

DLOGIC HONG KONG

21D Hong Kong Industrial Building
444 Des Voeux Road West
Western Districts, Hong Kong
Phone: +852 2818 6694
E-mail: info@dlogic.com